

P1127E-500

12.1" XGA TFT Expandable Industrial Touch Panel Computer with 7th/6th Gen Intel® Core™ i7/i5/i3, Celeron® or Pentium® Processor and PCI/PCIe Slot

Features

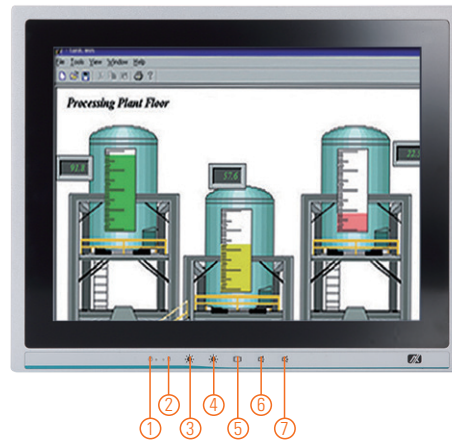
- 12.1" XGA TFT LCD display
- LGA1151 socket 7th/6th gen Intel® Core™ i7/i5/i3, Celeron® or Pentium® processors
- Intel® H110 chipset
- Less screw design for easy installation
- 4 USB 3.0, 2 USB 2.0 and 4 COM
- 1 PCIe x4 or 1 PCI slot
- Built-in speakers and optional Wi-Fi 802.11 b/g/n module
- Robust IP65 compliant aluminum front bezel
- Supports 5 OSD keys on the front panel



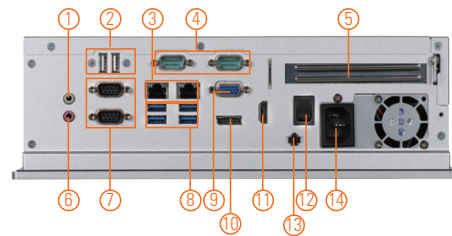
▲ Side view



▲ Back view



1. Display status LED
2. SATA status LED
3. Brightness -
4. Brightness +
5. Display monitor ON/OFF
6. Volume -
7. Volume +



1. 1 x Line-out
2. 2 x USB 2.0
3. 2 x LAN
4. 2 x RS-232
5. PCI or PCIe x4
6. 1 x Mic-in
7. 1 x RS-232/422/485 & 1 x RS-232
8. 4 x USB 3.0
9. 1 x VGA
10. 1 x DisplayPort
11. 1 x HDMI
12. Switch for power on/off
13. Remote switch button
14. AC plug



Introduction

The P1127E-500 is a multimedia 12.1" touch panel PC for kiosk application. It has a fashionable mechanism design and industrial-grade material front bezel which can avoid damage from chemical corrosion. To meet the demands of multimedia application, the P1127E-500 is powered by the high performance LGA1151 socket 7th/6th generation Intel® Core™ processor with the Intel® H110 chipset. It features four COM ports, two Gigabit Ethernet and up to 32GB memory of dual-channel DDR4-2133 that delivers high computing capability for high performance-demanding applications. The industrial touch panel PC is most suitable for kiosk, factory, and automation.

Expandable for 1 PCIe or 1 PCI

The P1127E-500 has one PCIe x4 or one PCI slot for expansion purpose. User can easily plug in standard half-size PCI or PCIe card based on any application needs.

Speaker and WLAN Antenna Supported

The P1127E-500 features built-in speakers for kiosk application to display multimedia content program. It also supports WLAN module antenna (optional) for wireless network connectivity.

User-friendly Screw Design

The P1127E-500 is designed with easy of maintenance in mind. There are only three screws on the back chassis, so that technicians can quickly remove the system's back cover with minimum effort.

Specifications

Front Bezel	Aluminum w/ IP65/NEMA 4 rugged protection	
LCD Panel	Display Type	12.1" XGA TFT LCD
	Brightness	500 nits
	Resolution	1024 x 768 pixels
	Viewing Angle	160°/140°
Main System	CPU	LGA1151 socket 7th/6th gen Intel® Core™ i7/i5/i3, Celeron® or Pentium® processor
	Chipset	Intel® H110
	System Memory	2 x 288-pin DDR4-2133 Long-DIMM, up to 32GB
	BIOS	AMI UEFI BIOS
	Storage	1 x 2.5" SATA HDD (9.5 mm height)
	Drive	N/A
	Watchdog Timer	255 levels, 1 to 255 sec.

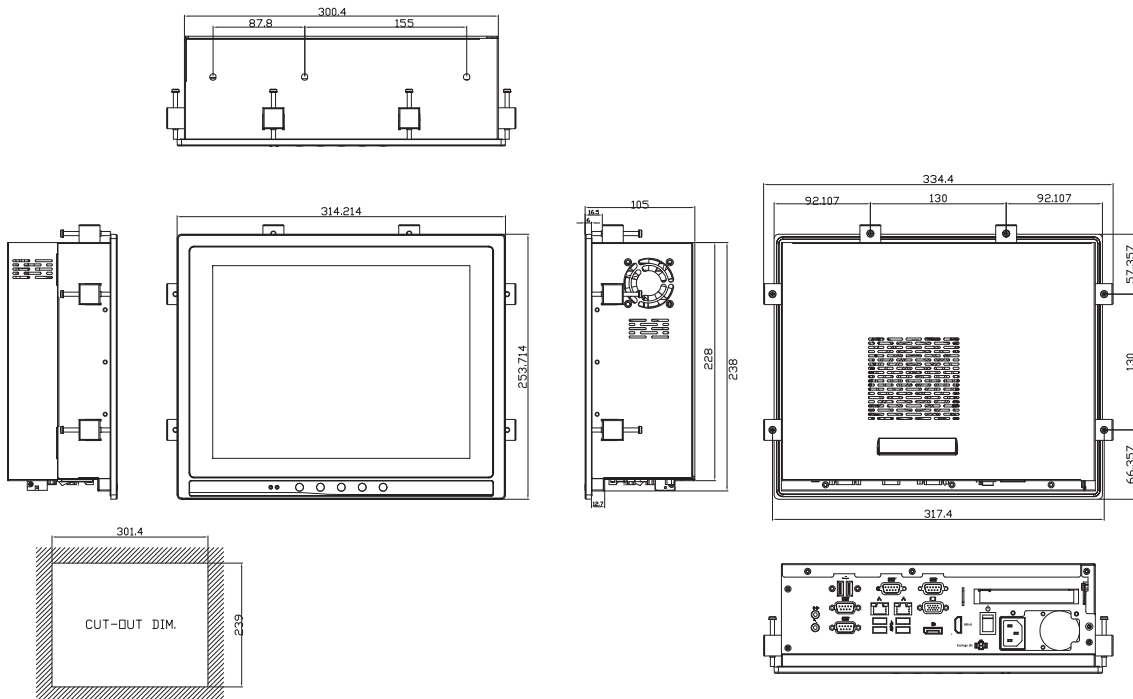
Specifications

IO Connector	3 x RS-232 1 x RS-232/422/485 1 x HDMI 1 x VGA 1 x DisplayPort 4 x USB 3.0 2 x USB 2.0 2 x 10/100/1000 Mbps Ethernet (Intel® i219-LM/Intel® i211-AT) 1 x Audio (Mic-in & Line-out) 1 x Remote Power Switch
TPM	N/A
Expansion Interface	1 x PCIe x4 or 1 x PCI
Touchscreen	5-wire resistive type Light transmission 79% 1 million activations (typical) at a single point
Power Supply	100 to 240 VAC, 200W
Power Consumption	121W
Dimensions	314.2 mm (12.37") (W) x 105 mm (4.13") (D) x 253.7 mm (9.99") (H)
Packing Dimensions	510 mm (20.08") (W) x 190 mm (7.48") (D) x 540 mm (21.26") (H)
Weight(net/gross)	4.2 kg (9.26 lb)/6.3 kg (13.89 lb)
Operating temperature	0°C to +50°C (+32°F to +122°F)
Relative humidity	10% to 90% @ +40°C, non-considering
Operating vibration	1.0G, 5 - 500 Hz, random
Certifications	CE

Packing list

- 1 x P1127E-500
- 1 x Panel mount kit
- 1 x US power cord

Dimensions



Ordering Information

P1127E-500-US w/PCIe x4 (P/N: E221127109)	12.1" XGA expandable industrial touch panel computer with LGA1151 socket 7th/6th gen Intel® Core™ i7/i5/i3, Pentium® or Celeron® processor, resistive touch screen, PCIe x4 slot, and 100 to 240 VAC with US power cord
P1127E-500-US w/PCI (P/N: E221127107)	12.1" XGA expandable industrial touch panel computer with LGA1151 socket 7th/6th gen Intel® Core™ i7/i5/i3, Pentium® or Celeron® processor, resistive touch screen, PCI slot, and 100 to 240 VAC with US power cord

- * Other configuration by request
- * Specification and certifications may vary based on different requirements

Optional Accessories

Wi-Fi kit	
881211270A0E	VESA & wall mount kit
E981604011	ATC10 (VESA arm clamp type)
E981604012	ATW10 (VESA arm wall mount)
E226171119	Stand kit
59403200B00E	Remote power switch cable (100 cm)

Optional EOS Installation

Windows® 7
Windows® 8.1
Windows® 10 IoT Enterprise

Optional OS Installation

Skylake: Windows® 7
Windows® 8.1
Windows® 10
Kaby Lake: Windows® 10